



**Strategic Metals Ltd.**

# ***Yukon's Project Generator***

***Corporate Presentation  
February 2026***



# Forward-Looking Statements

**Certain information regarding the Company contained herein may constitute forward-looking statements within the meaning of applicable securities laws. Forward-looking statements may include estimates, plans, expectations, opinions, forecasts, projections, guidance or other statements that are not statements of fact. Although the Company believes that the expectations reflected in such forward-looking statements are reasonable, it can give no assurance that such expectations will prove to have been correct. The Company cautions that actual performance will be affected by a number of factors, many of which are beyond the Company's control, and that future events and results may vary substantially from what the Company currently foresees. Discussion of the various factors that may affect future results is contained in the Company's Annual Report which is available at [www.sedar.com](http://www.sedar.com). The Company's forward-looking statements are expressly qualified in their entirety by this cautionary statement.**

**All technical information contained in this corporate presentation has been approved by Jackson Morton P.Geo., Vice President Exploration for Strategic Metals and qualified person for the purposes of NI 43-101.**



**Strategic Metals (“SMD”) is an experienced junior explorer that follows the generative model focused on early-stage acquisitions. SMD’s multifaceted assets include:**

## Quality Project Profile

- **81** wholly owned mineral projects located in Yukon, northern BC and western NWT.
- Widely diverse commodities and deposit types
- Net Smelter Return royalty interests in another **16** projects

## Project Partnerships

- **14** projects under option or in joint ventures
- Forge Resources to earn 60% in Alotta Project
- Trifecta Gold earning into the Tombstone Gold Belt portfolio

## Portfolio of Equity Investments

- An impressive portfolio of shareholdings in other junior companies and private investments with a current total value of **~CAD\$55 million**
- Major shareholder of multiple companies with advanced stage assets (Broden Mining, Rockhaven Resources, GGL Resources, Terra CO<sub>2</sub> Technologies)
- **\$3.5 million** in cash and no debt

## Leading Yukon Focused Exploration Team

- Preferred access to a highly successful exploration team and one of western Canada’s largest private databases



# Management Team and Board

**W. Douglas Eaton**, B.A., B.Sc.  
President, CEO and Director

**Ian J. Talbot**, B.Sc., LLB.  
COO

**Quinn Martin**, CPA, CA  
CFO

**Glenn R. Yeadon**, B.Comm. LLB.  
Secretary and Director

**Richard Drechsler**, B.Sc.  
VP, Communications

**Jackson Morton**, B.Sc., P.Geo.  
VP, Exploration

## **Independent Directors:**

**Bruce A. Youngman**, B.Sc.

**Lee A. Groat**, B.Sc, Ph.D.

**Rachele Gordon**, CPA, CA

**Ryan E. Schedler**, B.Sc, MBA

Former managing partner of Archer, Cathro & Associates. Exceptional knowledge of Yukon geology and contributor to several important discoveries. In 2012, Mr. Eaton was a co-recipient of the H.H. Spud Huestis Award.

Geologist and lawyer. Practiced exclusively in mining and securities law. Former in-house counsel with BHP Billiton World Exploration Inc.

Chartered Professional Accountant and principal of Donaldson Brohman Martin CPA Inc. Former principal of Davidson & Company LLP.

Barrister and solicitor practicing primarily in the field of securities law. Partner or associate with Tupper Jonsson & Yeadon since 1983.

Investor relations manager; First Nations and community liaison. Worked in the mining/mineral exploration industry since 2005. CEO of Trifecta Gold Ltd.

Former partner and senior geologist with Archer, Cathro & Associates. Vice President of Trifecta Gold Ltd., and Technical Advisor with Silver Range Resources Ltd.

Former President of Canplats Resources, acquired by Goldcorp for \$300 million in 2010. Former President and VP of Northern Dynasty Minerals.

Geology Professor, University of British Columbia, Director of Terra CO2.

Chartered Professional Accountant and Senior Manager in Taxation Services with MNP LLP.

Investment Professional, Managing Director of Condire Investors.



# Share Structure, Stock Chart and Investment Holdings

<b>SHARES OUTSTANDING :</b>	<b>110,995,967</b>
<b>OPTIONS:</b>	<b>9,710,000</b>
<b>FULLY DILUTED:</b>	<b>120,705,967</b>
<b>MARKET CAPITALIZATION:</b>	<b>\$41 million</b>
<b>CASH:</b>	<b>\$3.5 million</b>
<b>SHAREHOLDINGS<sup>1</sup>:</b>	<b>\$55 million</b>
<b>DISTRIBUTIONS TO SHAREHOLDERS<sup>2</sup>:</b>	<b>\$20 million</b>



Strategic Investments	Shares held	Ownership %	Market Price Feb 19	Implied Value
Rockhaven Resources	81,870,212	28%	\$0.21	\$17,193,000
GGL Resources	31,669,553	30.4%	\$0.08	\$2,533,000
Silver Range Resources	15,263,673	15.6%	\$0.15	\$2,290,000
Trifecta Gold	2,031,580	4.3%	\$0.23	\$467,000
15+ public holdings	Various	Various	Various	\$3,000,000
Terra CO2	15,000,001	5.8%	Private: Last financing \$0.95USD/\$1.30CAD	\$19,500,000
Broden Mining	4,944,444	31.9%	Private: Last financing \$2.10CAD	\$10,380,000
<b>Total</b>				<b>\$55,363,000</b>

## Major Shareholders

**STRATEGIC MANAGEMENT<sup>3</sup> – 8.7%**

**CONDIRE RESOURCE PARTNERS – 17.3%**

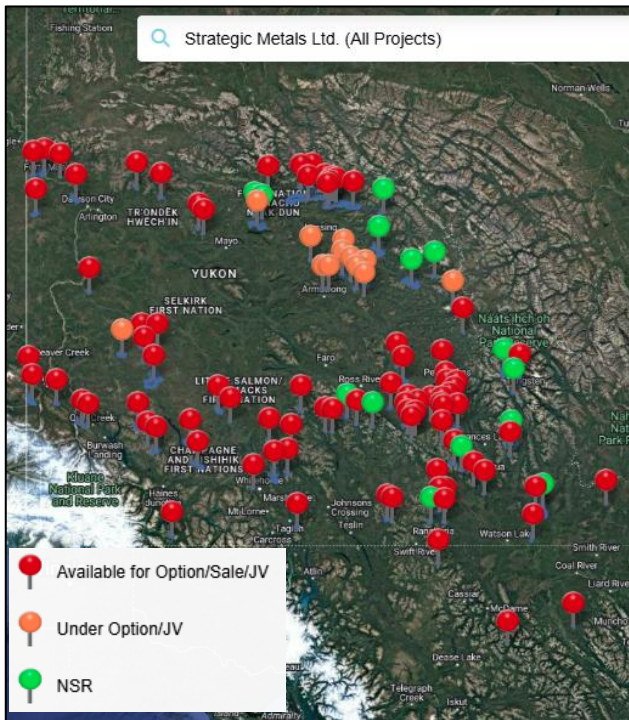
<sup>1</sup> marketable securities and private holdings as of Feb. 19, 2026

<sup>2</sup> total deemed value of 3 share distributions since 2008

<sup>3</sup> Includes consultants and key employees



# Organic Royalty Generation



81 projects held 100%

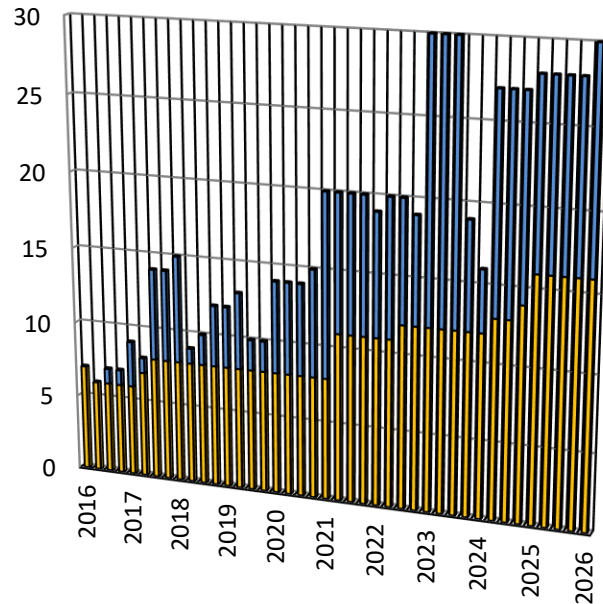
14 projects under option to others = cash and share payments + future NSR

16 existing NSR royalties

Over 10,000 mineral claims covering a wide suite of commodities

Multiple transactions being negotiated

## Growing Royalty Portfolio

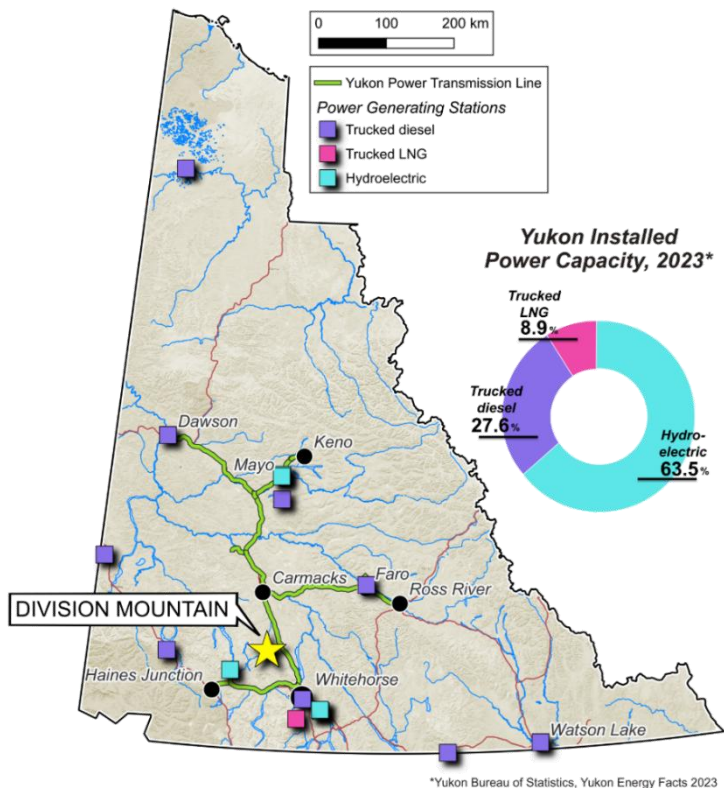


■ Properties Under Option  
■ Royalty Interests



# Division Mountain – A Solution to Yukon’s Energy Dilemma

Ideally located near the existing grid



Division Mountain contains a **current measured resource of 52.5 Mt of bituminous coal<sup>1</sup>** – envisioned to supply a state-of-the-art, clean coal-fired cogeneration plant **that would replace the Yukon’s existing and proposed diesel power generators while providing industrial scale heating opportunities**

In 2025 alone **40 MW of electrical capacity** was added to the Yukon grid by rental diesel generators using trucked fuel from out-of-territory

1. Technical Report entitled “NI 43-101 Technical Report on the Division Mountain Property, Yukon Territory, Canada” dated July 14, 2025, a copy of which is available on the Company’s website at <https://strategicmetalsltd.com/projects/division-mtn-coal/>



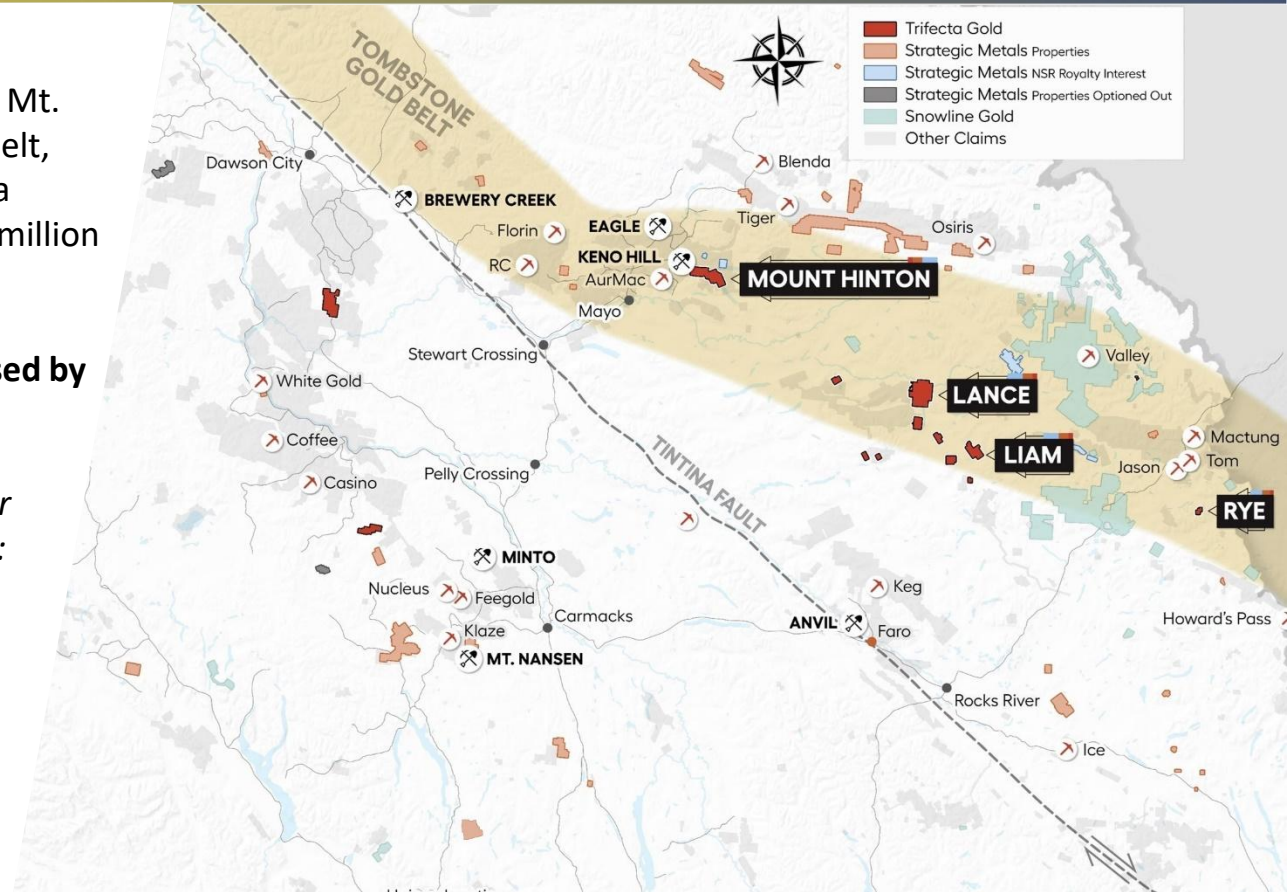
# Tombstone Gold Belt Property Transactions

Trifecta Gold can earn a 100% interest in Mt. Hinton, Rye and 9 other projects in the belt, subject to a 2% NSR by issuing Strategic a 9.99% share payment after spending \$6 million on exploration

**Gold endowment in the belt has increased by over 20 million ounces since May 2020**

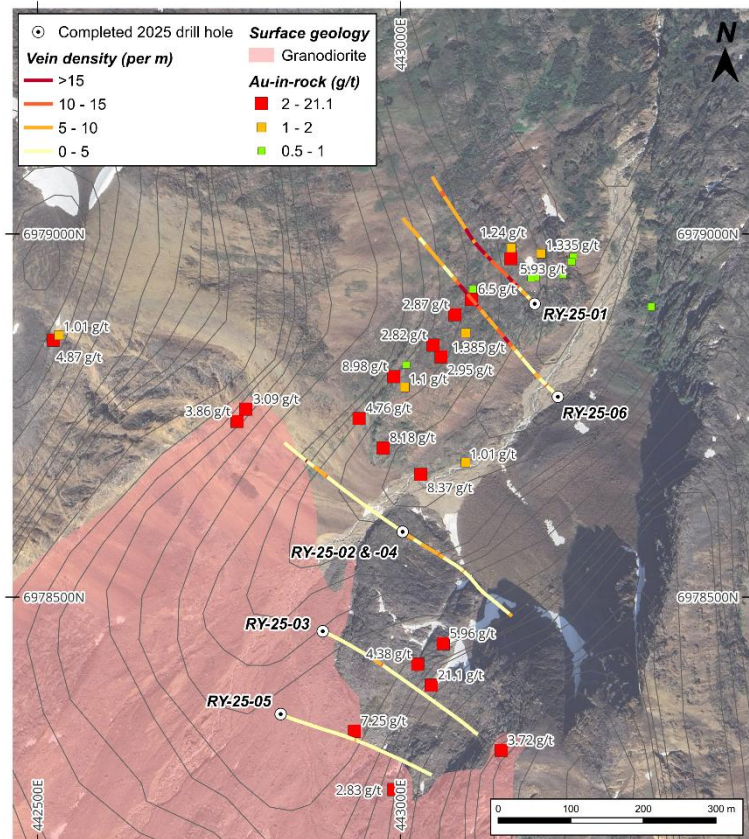
*Strategic owns meaningful NSRs on other projects in the belt, including portions of:*

- *Onyx Gold's King Tut Project*
- *Metallic Minerals' Keno Summit*
- *Snowline Gold's Einarson Project*
- *Honey Badger Silver's Plata Project*





# Rye Property – Under Option to Trifecta Gold



Inaugural drill program reported broad zones of sheeted quartz-tourmaline±arsenopyrite veins in both the Itsi pluton and surrounding hornfelsed sediments

**Hole RY-25-01: 1.98 g/t gold over 15 metres within a broader intercept of 1.02 g/t gold over 37 metres**

**Hole RY-25-02: 44.3 g/t gold over 0.58 metres**

**Hole RY-25-04: 1,465 g/t silver over 1.97 metres**

Rye is located 14 km south from the North Canal Highway

Surface rock sampling from the drill area returned many assays grading from 1 to 21.1 g/t gold



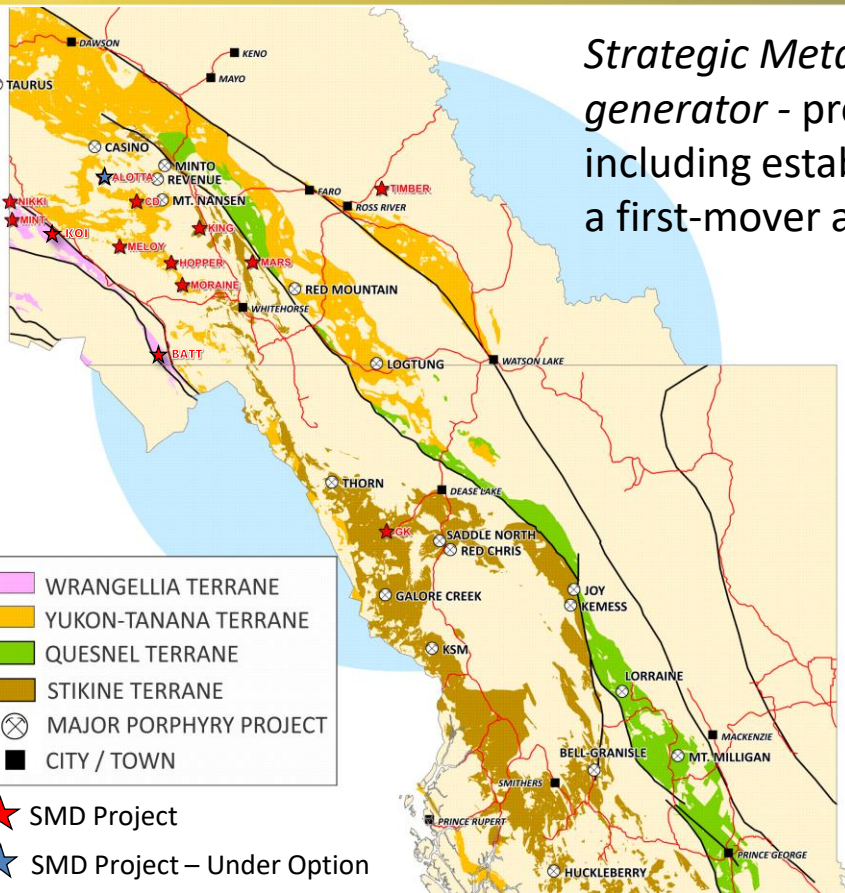
# Copper-Gold Porphyry Pipeline

*Strategic Metals is Yukon's pre-eminent copper porphyry project generator - projects span a broad range of geological environments, including established porphyry camps, as well as frontier districts with a first-mover advantage*

**Stikinia Terrane:** *World-Class copper-gold porphyry deposits in British Columbia (Red Chris, Kemess and Galore Creek) resulting from Late Triassic – Early Jurassic island arc magmatism*

**Yukon-Tanana Terrane:** Subject to extensive Cretaceous magmatism associated with copper-gold porphyry systems in Yukon and Alaska (*Casino, Taurus and Revenue*)

**Wrangellia Terrane:** Covers an overlooked, Oligocene-aged magmatic arc in southwest Yukon preserving high-level porphyry mineralization





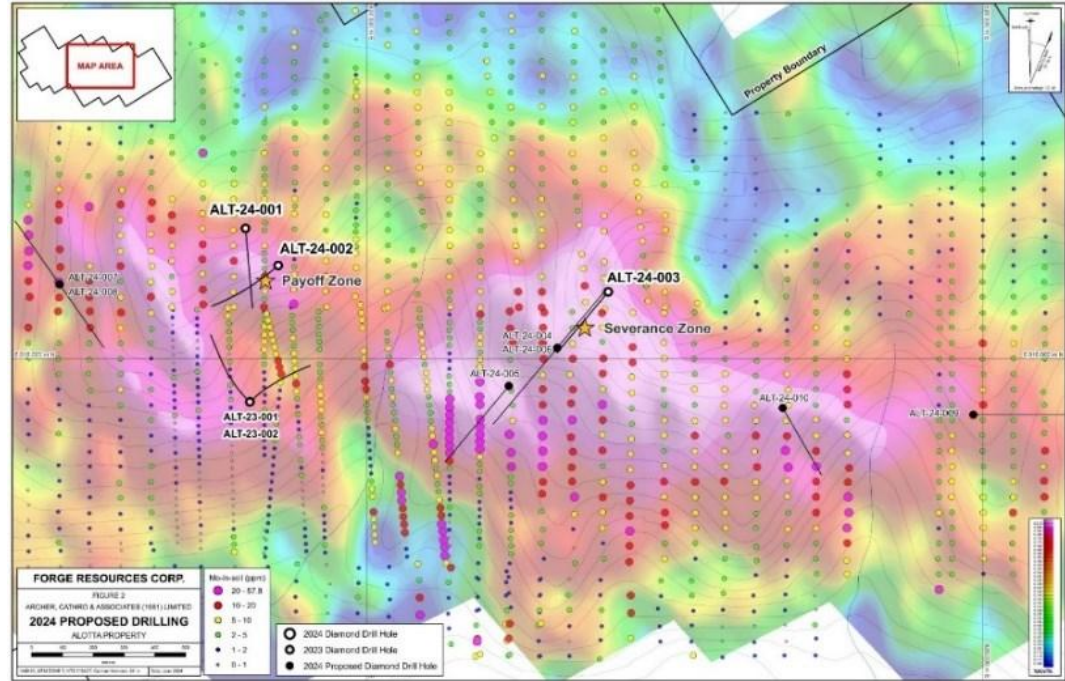
# Alotta – Under Option to Forge Resources

Large scale copper-gold porphyry target marked by a broad magnetic low, coincident anomalous geochemistry and 30mV chargeability anomaly

Total potassium counts from radiometric surveying demonstrates a large potassic high within an area of magnetic depletion

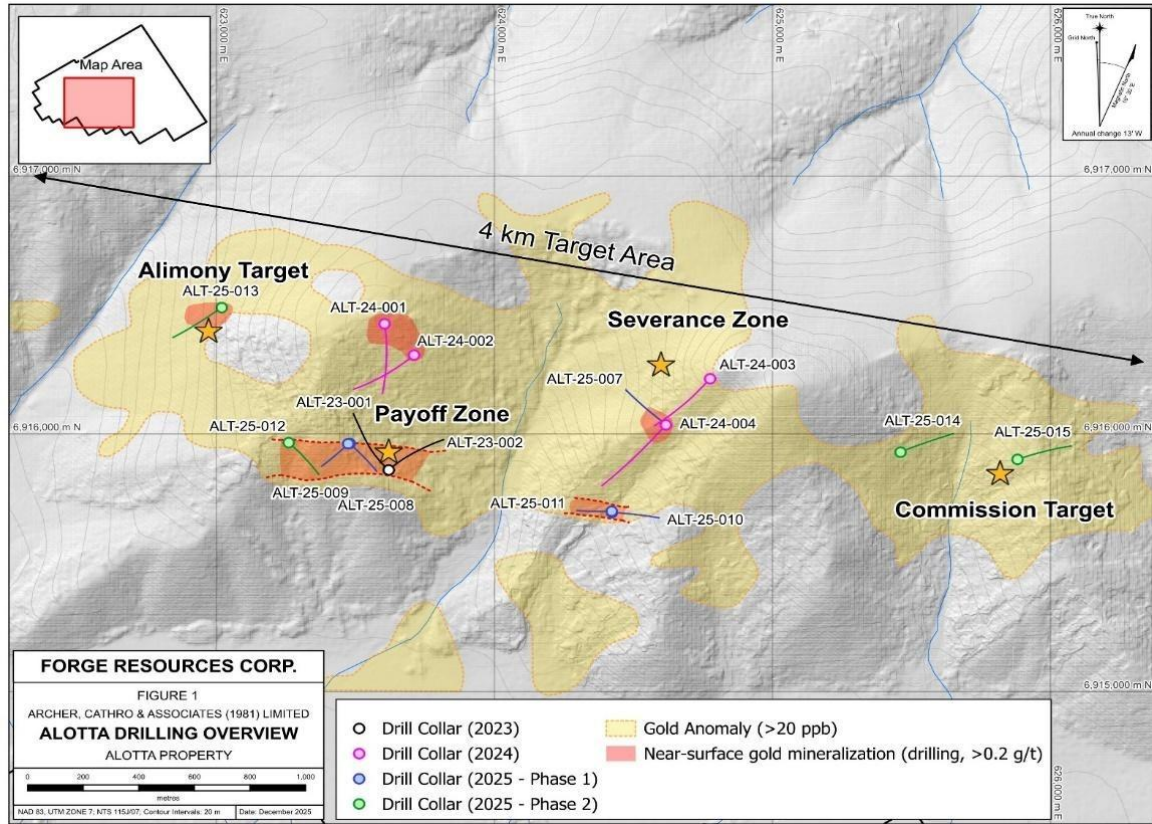
Located 40 km south-east of the Casino Au-Cu porphyry deposit (amongst the largest undeveloped Gold-Copper deposits in the World)

**Forge Resources can earn 60% by spending \$11 million by the end of 2027 and paying Strategic \$500,000**





# Alotta – Under Option to Forge Resources



PJ Murphy, CEO of Forge Resources, states: “2025 marked a transformational year for the Alotta Project. We are extremely pleased **that every drill hole completed to date has intersected mineralization**”

**Playoff Zone** ALT-25-012 composite of 78.00 metres of 2.01 g/tonne gold

**Alimony Zone** discovery hole ALT-25-013 composite of 112.23 metres of 0.66 grams/tonne gold, including 55.53 m of 1.04 g/t Au and 1.6 m of 25.8 g/t Au

**Commission Zone** first drill holes expand known porphyry style mineralization to over 3 km



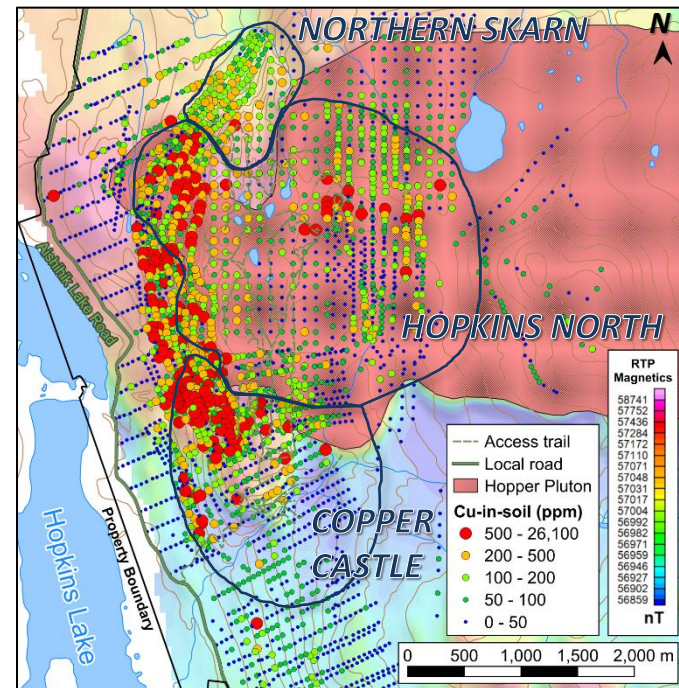
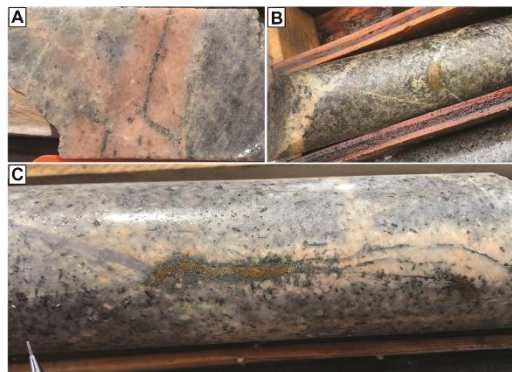
# Hopper Project

Strategic Metals recently regained 100% interested in the *road-accessible* Hopper Copper-Gold Project – hosting significant porphyry copper mineralization at *Hopkins North* that is largely untested by drilling, and gold-enriched skarn mineralization at *Copper Castle* that remains open along strike and down-dip

The best porphyry drill intersections to date comprise chlorite-altered monzonite and porphyry dykes, with zones of vein-controlled potassic alteration, indicating proximity to an untested, higher-temperature porphyry centre

2021 drill results from the *Hopkins North* porphyry target include **0.22% copper over 114.38 m**

The Northern Skarn mirrors the Copper Castle Zone but has seen little drilling



A) Molybdenite veinlets with K-feldspar halos; B) vein-controlled chalcopyrite in granodiorite, with K-feldspar alteration halos; C) Re-activated, A-type veins with pyrite, chalcopyrite, and a K-feldspar alteration halo, hosted in porphyry dyke



# Hopper Project

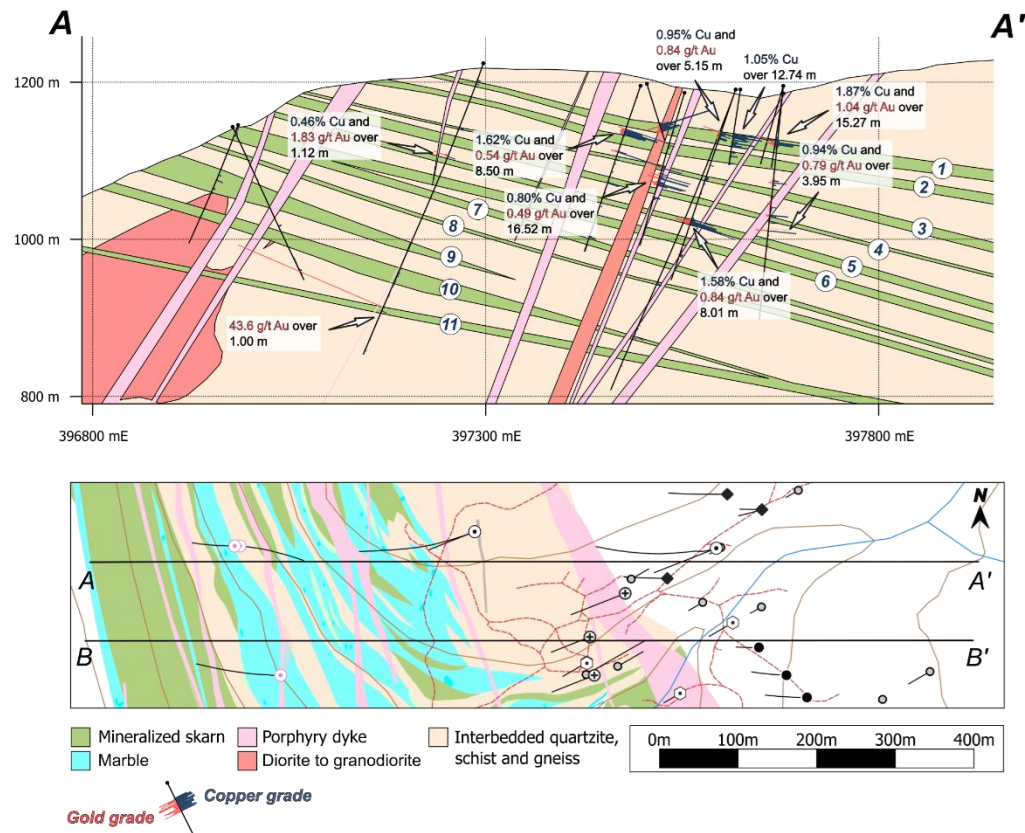
The *Copper Castle* target comprises at least 11 stacked and laterally extensive copper- and gold-bearing skarn horizons

The horizons typically range from 2 to 20 m in thickness and dip shallowly to the east

Few of the historical drill holes extended deep into the stratigraphic section, but significantly, deeper drill holes have intersected skarns with a greater gold content, including:

- **43.6 g/t gold over 1.0 m;**
- **9.44 g/t gold over 2.0 m; and,**
- **12.15 g/t gold and 0.95% copper over 2.65 m**

*The full stratigraphic thickness of the Copper Castle target remains untested*



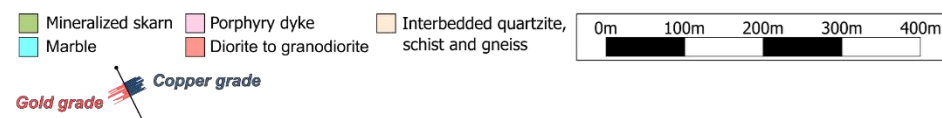
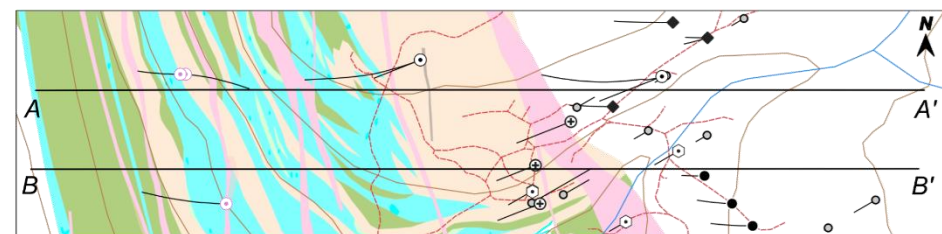
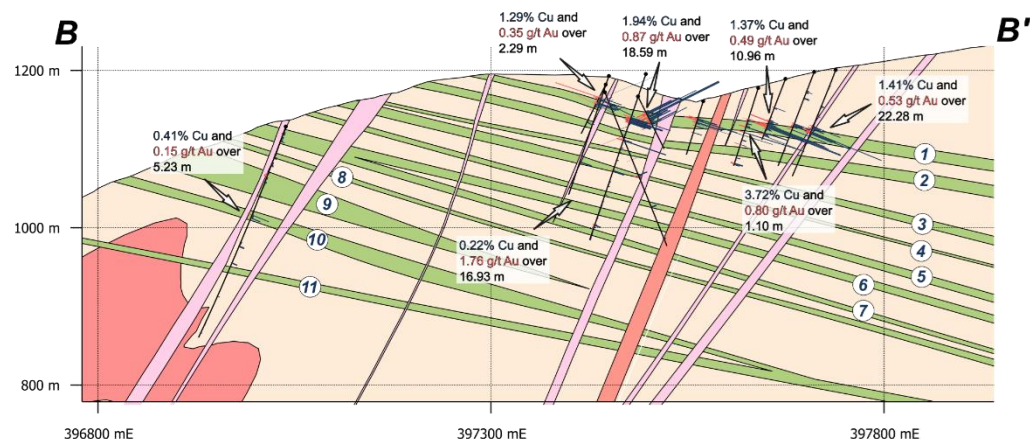


# Hopper Project

Partner-funded drilling in 2021 and 2022 at *Copper Castle* was directed toward a discrete electromagnetic conductor, yielding some of the best intercepts to date:

- **1.41% copper and 0.53 g/t gold over 22.28 m**
- **1.87% copper and 1.04 g/t gold over 15.27 m**

*Copper Castle* remains open to expansion along strike and down dip, and other strong geochemical and electromagnetic conductors south of *Copper Castle* have not been drill tested

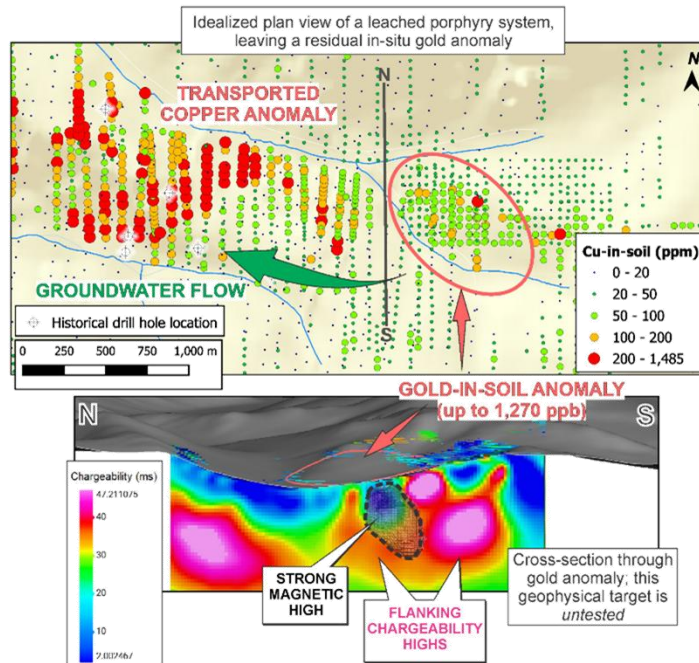




100% owned CD Project, where porphyry-style veining and alteration have been identified in an area underlain by a quartz diorite porphyry stock and breccia body of Late Cretaceous age – expressed on surface by a 1,200 m by 400 m area of highly anomalous gold- (**up to 1,270 ppb**) and copper-in-soil (**up to 1,485 ppm**) geochemistry

A new evaluation of the project highlights a residual, in-situ gold-in-soil anomaly cored by a conspicuous magnetic high, coincident resistivity low and flanking chargeability highs

These untested geophysical features, which are situated at shallow depths, are characteristic of chargeable sulphide minerals around a porphyry core



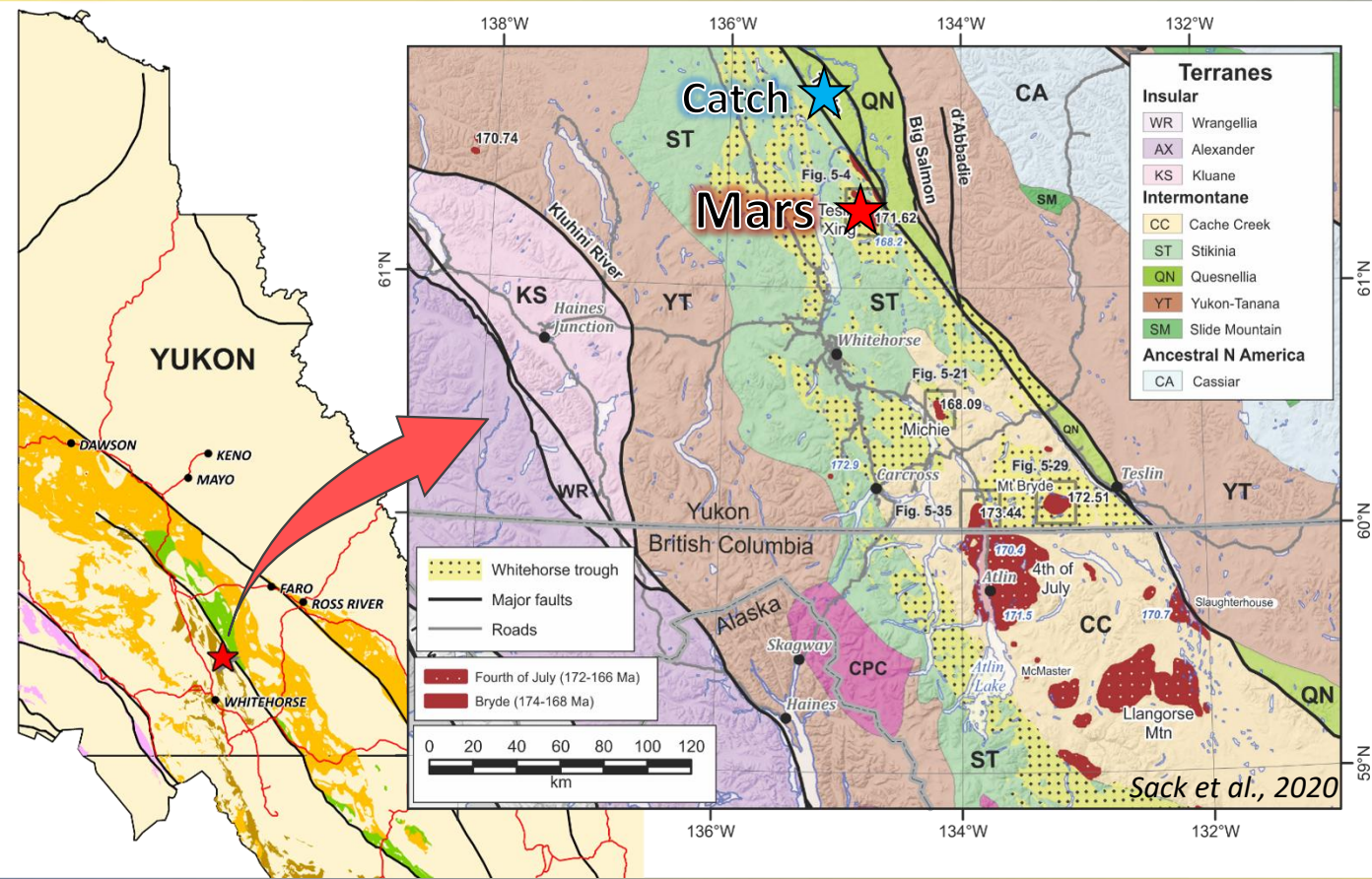
A) Quartz-biotite-magnetite veins developed within k-feldspar altered porphyry from the core zone of the Maloney area; B) Thin epidote-chlorite veins overprinting quartz-sericite veins within a strongly altered, quartz-sericite-pyrite porphyry from the Maloney area



# Mars Project

Located 65 km north-northeast of Whitehorse and 60 km south-southeast of Cascadia Minerals Ltd.'s Catch Project

Covers the complex, multi-phase Teslin Crossing pluton – a Mt. Milligan analogue with the same mid-Jurassic age



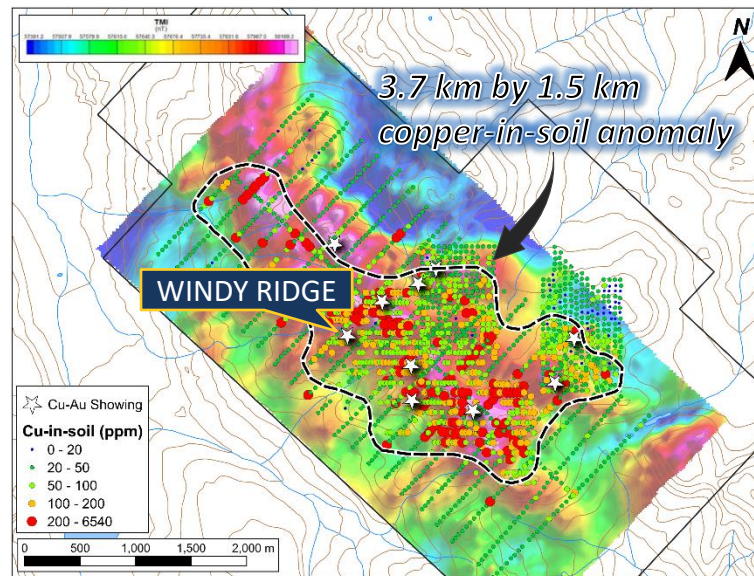


Limited historical drilling with a median depth of 136 m – many of the drill holes demonstrate the presence of widespread, porphyry-diagnostic hydrothermal alteration

Drill results from hole MARS-11-02, targeting Windy Ridge, returned:

- **0.24% copper and 0.17 g/t gold over 14.7 m; and,**
- **0.16% copper and 0.27 g/t gold over 23 m**

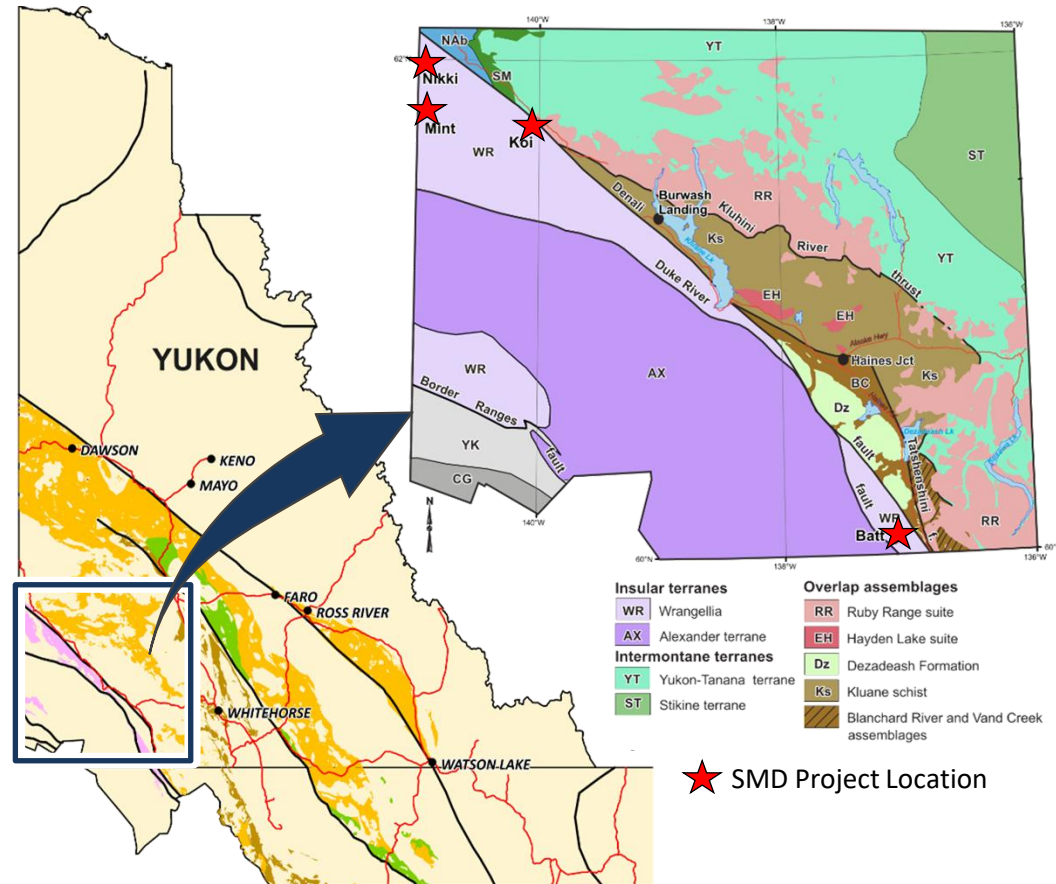
Magnetic response, geological mapping and surface mineralization correlates strongly with *elevated copper-in-soil geochemistry*, providing strong evidence of a porphyry copper-gold system



Potassic altered monzonite with biotite-chalcopyrite veins, cut by a late quartz vein (DDH MARS-11-02; 216.4 m)



# Southwest Yukon



During Oligocene-Miocene time, subduction of the Pacific plate beneath Vancouver Island, southern Yukon and Alaska lead to arc magmatism on the leading edge of the continent

Strategics' SW Yukon portfolio covers this overlooked magmatic arc, which preserves high-level porphyry mineralization

**Nikki:** historical drilling returned 0.15% Cu over 150 m and 0.12% Cu over 140 m, and chip samples of 0.47% Cu and 0.2 g/t Au over 8 m

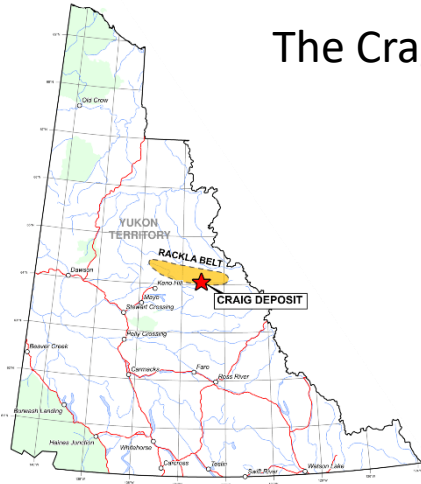
**Mint:** 0.2 g/t Au over 331 m (entire hole) including 0.6 g/t Au over 53 m at the bottom of the hole



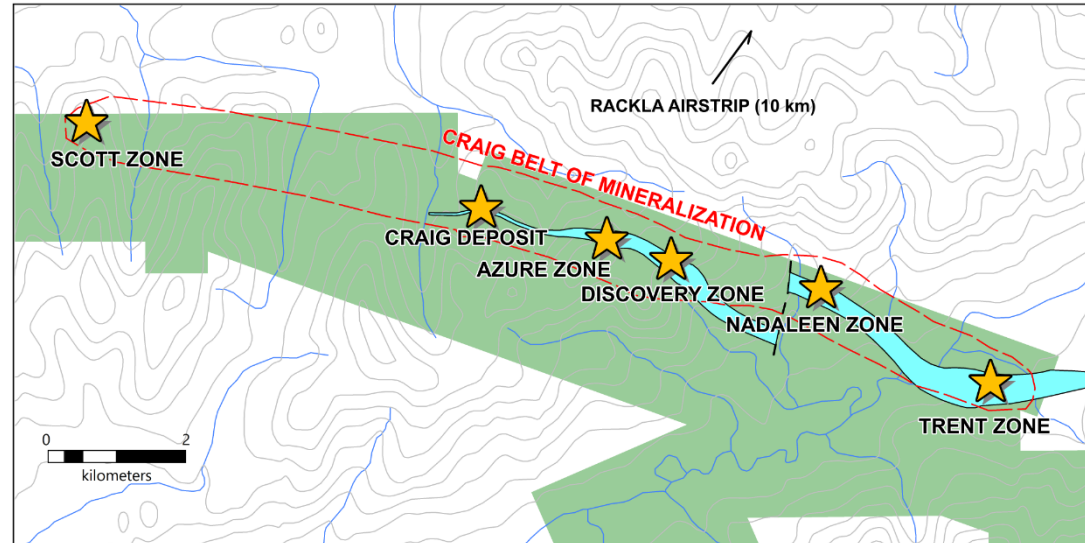
# Crag – Under Option to Hertz Energy

The Crag Belt is a 14 km CRD belt centered on the open-ended Craig Deposit\*

Craig Deposit historical mineral resource estimate of 874,980 tonnes averaging 123.4 g/t silver, 8.5% lead and 13.5% zinc\* **remains open**



Hertz can earn a 100% interest in the Crag and adjacent Rod property for an initial payment of \$100,000 cash and 2,500,000 shares and a further \$1,500,000 in cash or shares by the first anniversary. Strategic will retain a 2% NSR with a buy-down to 1% for 500 ounces of gold or cash equivalent.



\*Resources were estimated by Falconbridge Limited in the mid-1990's before the implementation of NI43-101, and therefore considered historical in nature. A qualified person has not done sufficient work to classify the historical estimate as current mineral resources or reserves and the issuer is not treating the historical estimate as current mineral resources or reserves.



# 32.8% interest in Broden Mining

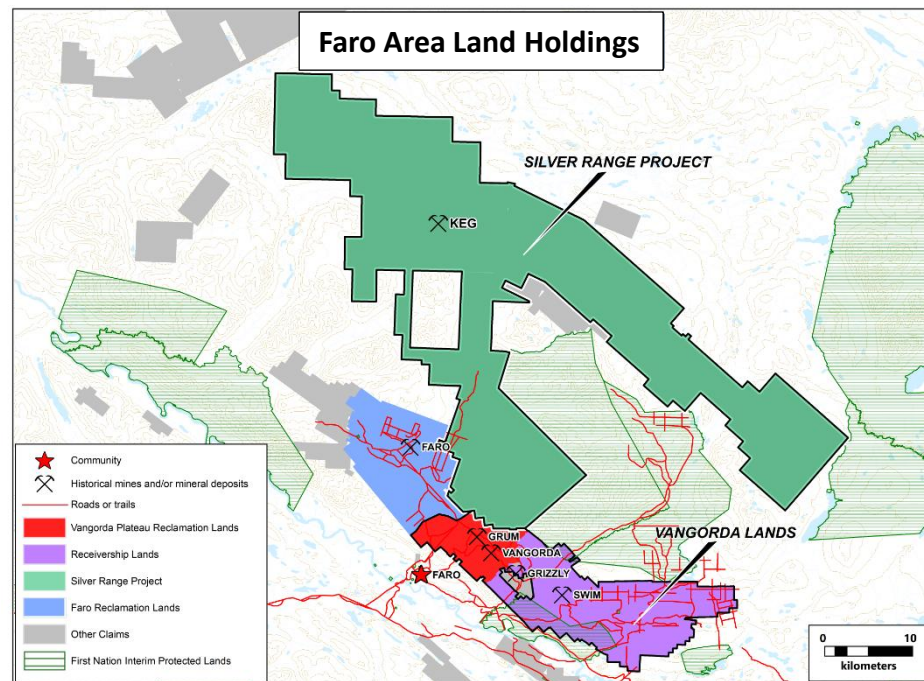
Broden Mining Ltd. is a purpose-created company working with Ross River Dena Council to acquire lands in the Faro Mining District, Yukon.

The targeted lands host 5 deposits including the partially mined Grum deposit and untouched Grizzly deposit. The very large land package has excellent exploration potential in addition to the known deposits that collectively contain more than:

**5.38 billion pounds of zinc,  
3.54 billion pounds of lead,  
111 million ounces of silver, and  
870,000 ounces of gold.\***

The targeted lands are located immediately northeast of the town of Faro and have excellent infrastructure. The known deposits have an estimated operational life of more than 20 years using modern, sustainable resource development techniques.

\*in all resource categories (see [brodenmining.ca](http://brodenmining.ca) for details). The reader is cautioned that the resource estimates are historical in nature.





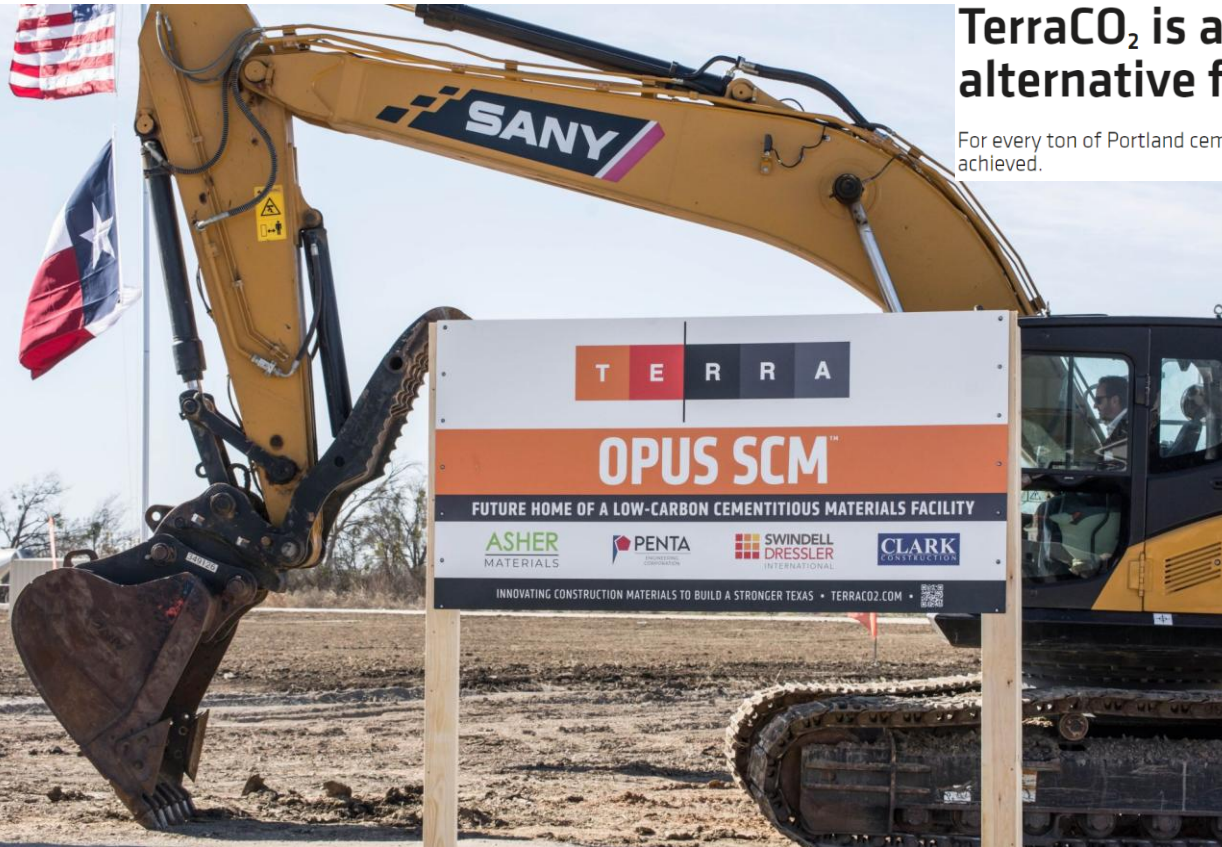
# Terra CO<sub>2</sub> (5.8% shareholding)

**TerraCO<sub>2</sub> is a scalable, low-carbon alternative for cement replacement.**

For every ton of Portland cement displaced by a Terra product, a 70% reduction in CO<sub>2</sub> emissions is achieved.

July 2025: Terra secures US\$124.5 million equity financing

December 2025: Terra officially broke ground on Terra's first OPUS SCM™ low-carbon cementitious materials facility — a first-of-its-kind project designed to help decarbonize construction while strengthening local supply chains.





# Rockhaven Resources (28% shareholding)

## Rockhaven Resources Ltd. Klaza Deposit Highlights:

- One of the highest-grade gold deposits ever discovered in Yukon,
- Over 1 million ounces of gold and 27 million ounces of silver,
- All zones open for expansion,
- 100% owned: No underlying royalties on the deposit area,
- Road accessible, >250 km<sup>2</sup> land position
- Community support: Exploration Benefits Agreement signed in 2015,
- 2020 PEA shows post-tax NPV(5%) of \$540 million and IRR of 49% at US\$1740 gold,
- **New economic study underway**
- Recent additions to the mining team:
  - Manuel Estrada, COO: 14 years with Capstone Mining
  - Brad Thrall, Director: former COO Alexco Resources
  - Stephen Quin, Technical Advisor: Led Minto mine through feasibility, construction and production
  - Randall Thompson: former COO Silver Tip Mine



Strategic is using its knowledge and property assets to build its royalty portfolio and grow its shareholdings in companies with advanced projects.

Routine cashflow from option and sales agreements will be used to maintain and expand the Company's project base.

However, windfall profits from the sale of royalties or shares will be returned to shareholders through dividends and/or share buy-backs.



## **Strategic Metals Ltd.**

**510-1100 Melville Street**

**Vancouver, BC, V6E 4A6**

**Phone: 604-687-2522**

**Toll Free: 1-888-688-2522**

**Web: [www.strategicmetalsltd.com](http://www.strategicmetalsltd.com)**

## **V.P. Communications:**

**Richard Drechsler**

**Phone: 604-687-2522**

**Toll Free: 1-888-688-2522**

**E-mail: [rdrechsler@strategicmetalsltd.com](mailto:rdrechsler@strategicmetalsltd.com)**